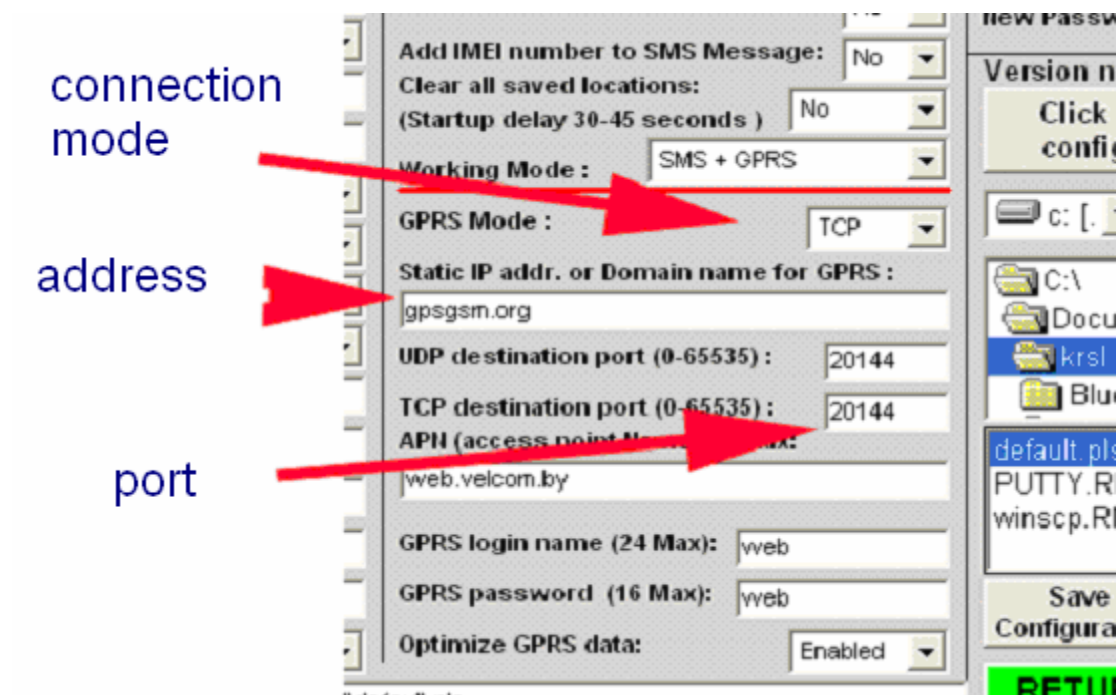


Connection gps-hardware to web-system of monitoring GPS-trace.

Manual (example PT-33).

1. Tuning the hardware. For direction packets from device you can set in the configuration:

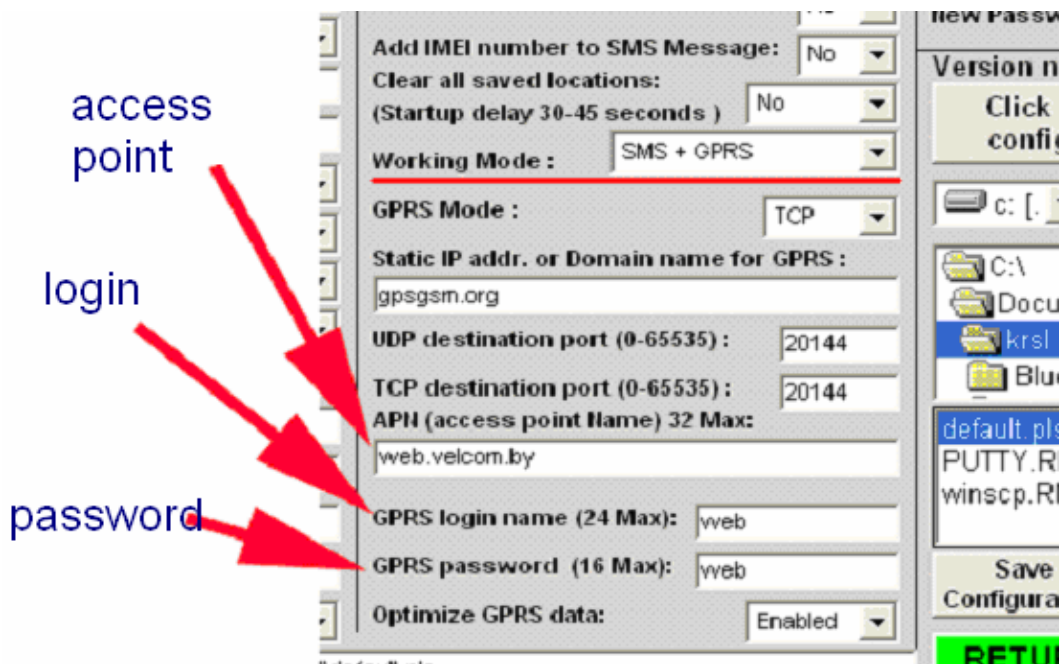
- Connection mode (TCP, UDP)
- Server address (gpsgsm.org,)
- Destination port to server (20144)



You can create this use the device configuration program, or send sms (some types of devices support this mode configuration).

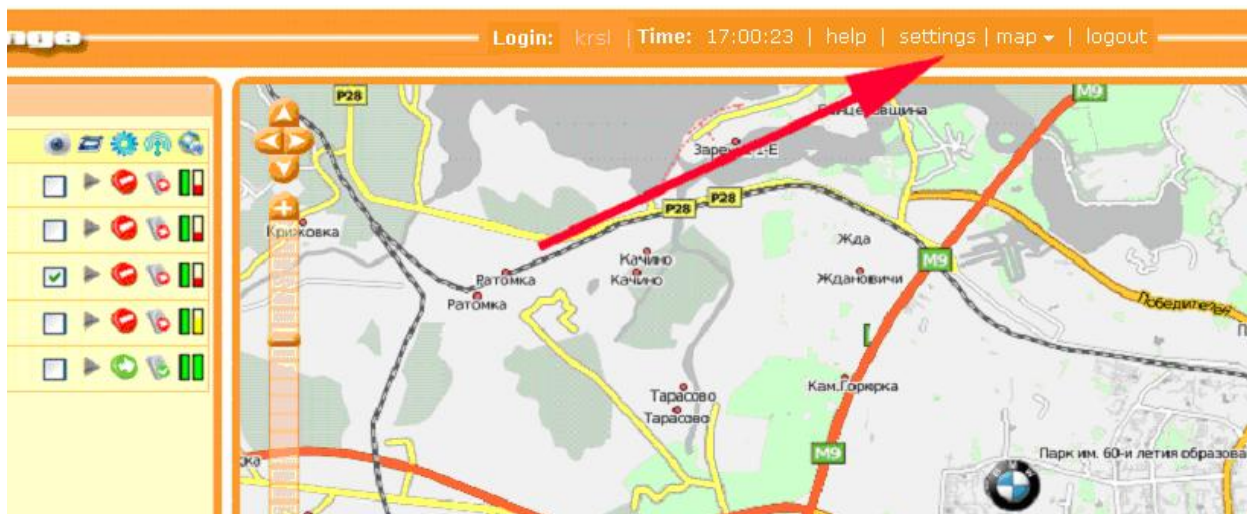
Also you have to set settings of gprs-connection:

- APN – access point name
- login
- password



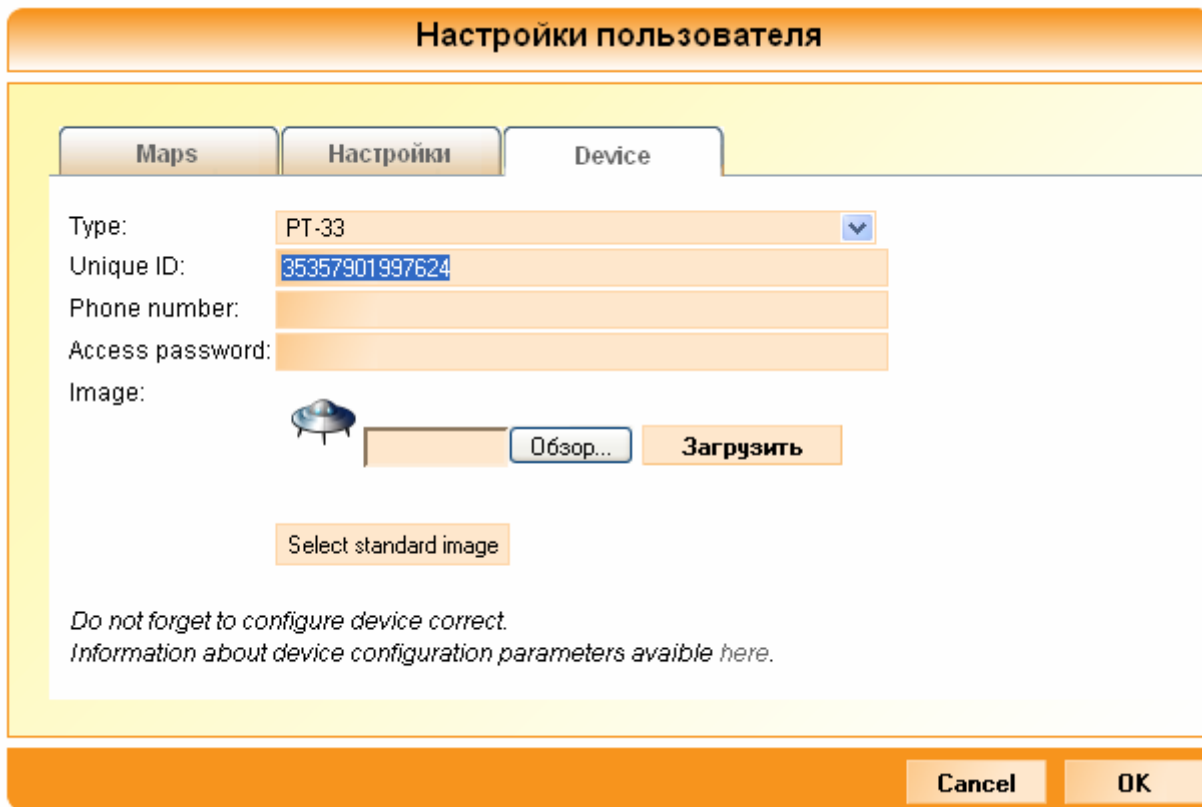
2. Turning object to GPS-Trace Orange.

To tuning object select in menu "Settings".



In the opened window select tab "Device", and set next parameters:

- Type (PT-33)
- Unique ID (35357901997624) – this is a unique identifier your device, as a rule set manufacturer.



3. Now check that device is turn on, enable satellites and installed connection to server.

